

# ORTHOPANTOMOGRAPH™ OP 3D™ PRO

A platform for changing needs



# Orthopantomograph OP 3D PRO

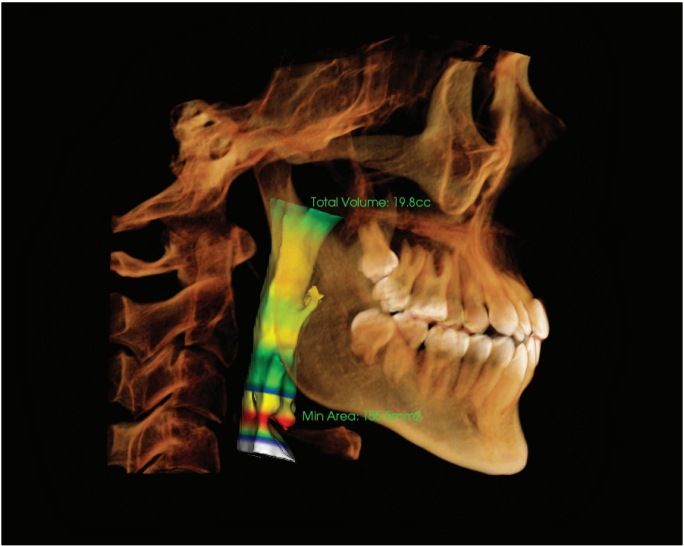
The OP 3D Pro system is the most comprehensive 3-in-1 platform designed for today and tomorrow, covering the entire maxillofacial region. The OP 3D Pro system combines an advanced panoramic imaging system with either cephalometric or cone beam 3D or a combination of both, giving you a truly adaptable platform.

With OP 3D Pro units, each feature is optimized to provide the best possible image quality and efficient clinical use. OP 3D Pro units master the details.

## OP 3D PRO

### Complete Versatility

ORTHOPANTOMOGRAPH™ OP 3D Pro units are platform for changing needs. Depending on the configuration, OP 3D Pro units can be upgraded with CBCT or cephalometric modalities.



## Excellence For All Clinical Needs

- General Practitioners
- Endodontics
- Implantology
- Orthodontics
- Oral & Maxillofacial Surgery
- Periodontics
- Prosthodontics
- Airway

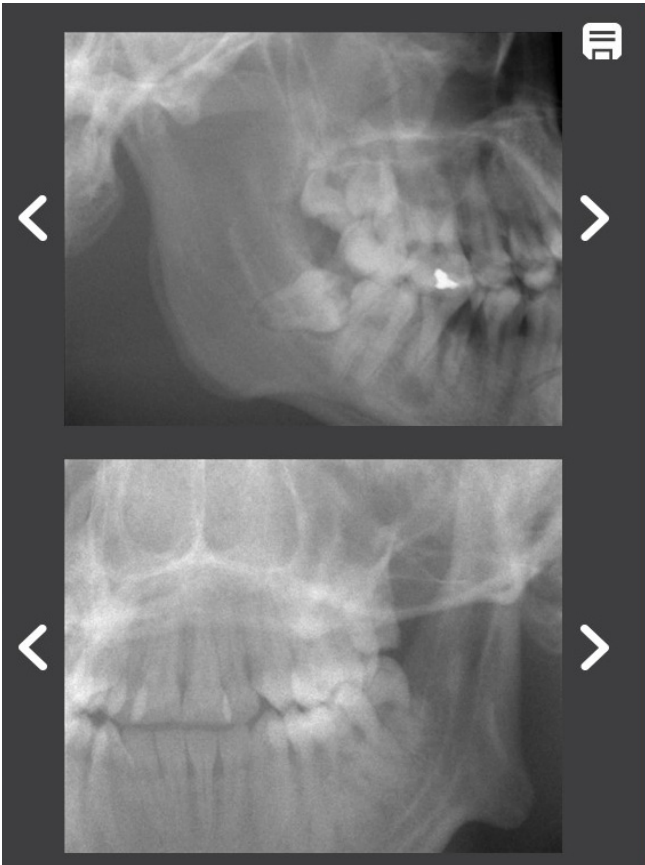


## Control Without Compromise

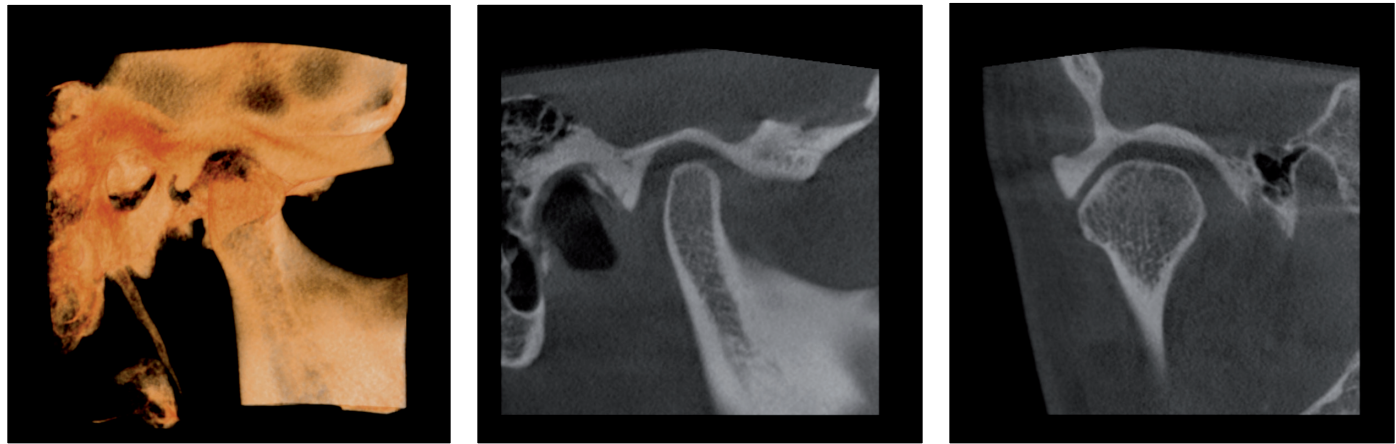
With ORTHOPANTOMOGRAPH™ units, no usability compromises have been made. The OP 3D Pro system offers ultimate control for obtaining diagnostic information from the correct region of interest. This is achieved with the optimum combination of patient positioning and SMARTVIEW™ scout image.

### SMARTVIEW™ Image Functionality

SMARTVIEW™ image functionality FOV positioning accuracy can be verified or adjusted if needed by taking SMARTVIEW™ scout image before CBCT examination. Furthermore, the FOV can be positioned freely to the region of interest, both in horizontal and vertical directions—with ease and confidence.



Even the smallest FOV can be efficiently and precisely positioned with the help of the intuitive user interface and SMARTVIEW™ functionality.



## User-Experience In Focus

The large, easy-to-use 10” user interface enables intuitive usage and setting of imaging parameters from the very beginning. The result is fast and effortless workflow for all modalities.

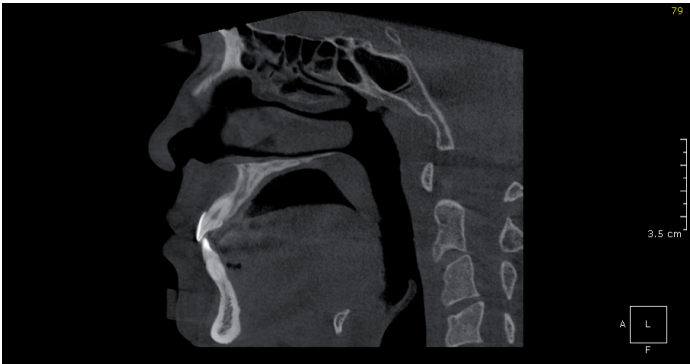




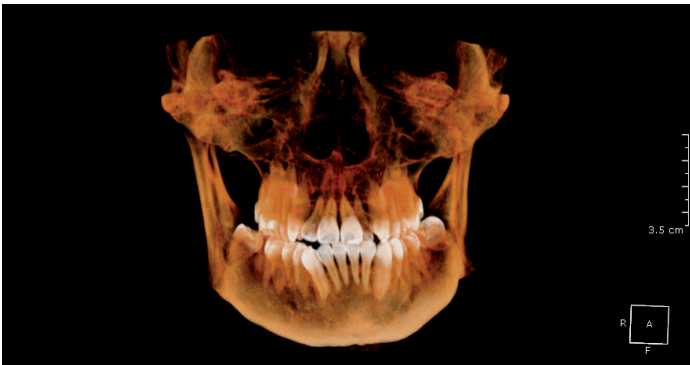
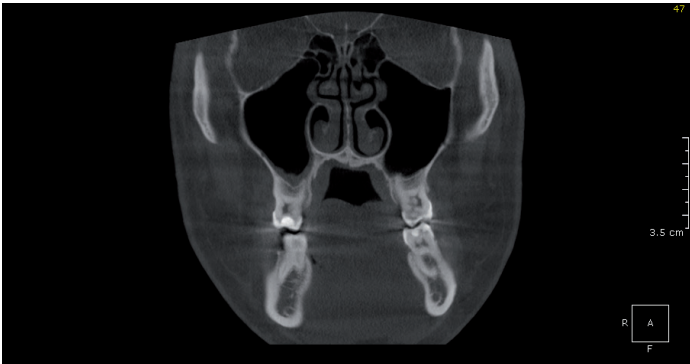
# Precision For Every Patient

3D images provide valuable information vital to diagnosis and determining the best course of treatment. Evaluation of different morphologies is easy as the region of interest can be viewed from all directions.

The precision of the OP 3D Pro system is founded on the carefully optimized image quality parameters of each program. Both the volume and the resolution can be selected according to the indication and region of interest. The OP 3D Pro system provides professionals with the tools to succeed.

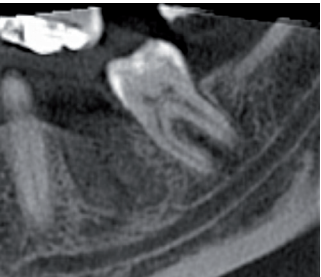


**Automatic Dose Control for 3D**  
With the proprietary ADC feature, patient-specific exposure settings are obtained automatically providing premium quality images at optimal dose for the patient.

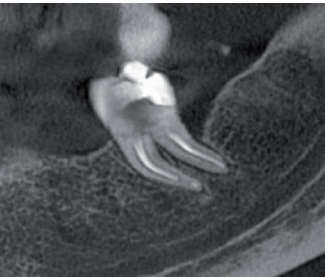


# Resolution For Each Indication

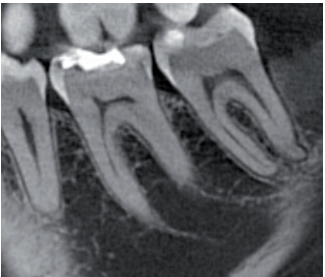
For each FOV size, it is possible to choose between different resolutions. Additionally, the user selectable Metal Artifact Reduction (MAR) tool can be used with every available FOV.



**Low Dose Technology™ scan**  
(LDT) scan can be utilized in dose sensitive cases and control or follow-up situations where lower resolution is acceptable.



**Standard resolution scan** with optimized patient dose can be used for general diagnostics.



**High resolution scan** offers extremely sharp images for more detailed diagnosis.



**Endo resolution scan**  
85 µm voxel size with MAR tool specially designed for endodontic applications. Endo resolution is available for the smallest FOV.

Image quality and patient dose optimized—in all OP 3D Pro programs

80%

Dose Reduction with Low Dose Technology™

OP 3D Pro users have the luxury of using Low Dose Technology™ (LDT), which provides quality optimized low dose scans at up to an 80% reduction in dosing compared to the standard 3D acquisition protocol\* while keeping the clinical value still intact.

\*OP300 Maxio (OP 3D Pro) Dosimetry report, Prof. John B. Ludlow, April 2014.

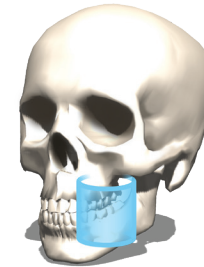




## OP 3D PRO Small Panel

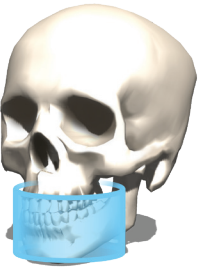
### FOV 6x4 cm

Optimized for single-site implants or localized diagnostics, keeping the patient dose at a substantially reduced level.



### FOV 6x8 cm

Covers the complete dental arch for multiple implant placement and allows for the use of surgical guides.



## OP 3D PRO

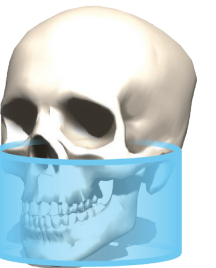
### FOV 5x5 cm

Optimized for single-site implants or localized diagnostics, keeping the patient dose at a substantially reduced level.



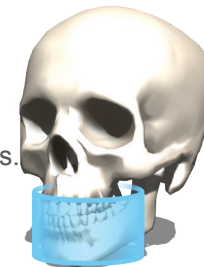
### FOV 8x15 cm

Covers both mandibula and maxilla including airway and upper cervical spine or the sinus. Both TM joints can also be studied.



### FOV 6x8 cm

Covers the complete dental arch for multiple implant placement and allows for the use of surgical guides.



### FOV 13x15 cm

Covers the entire maxillofacial region.



### FOV 8x8 cm

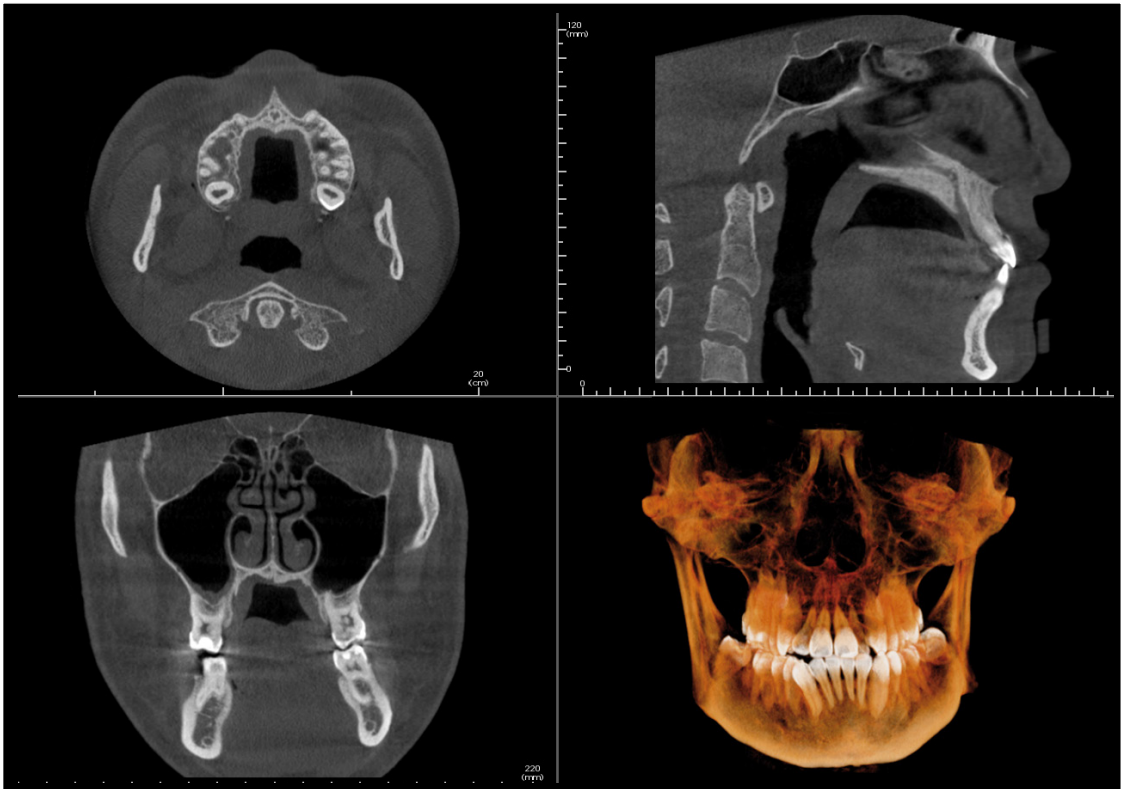
Covers the entire dentition, including both mandibula and maxilla as well as a portion of maxillary sinus.



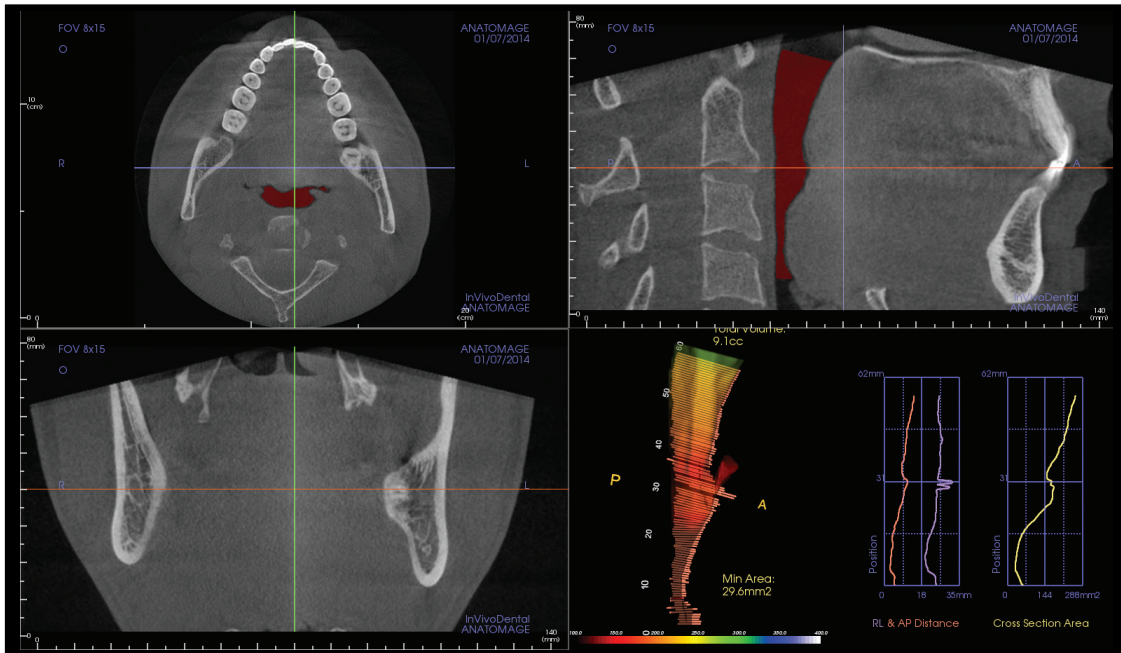


Clinical Images

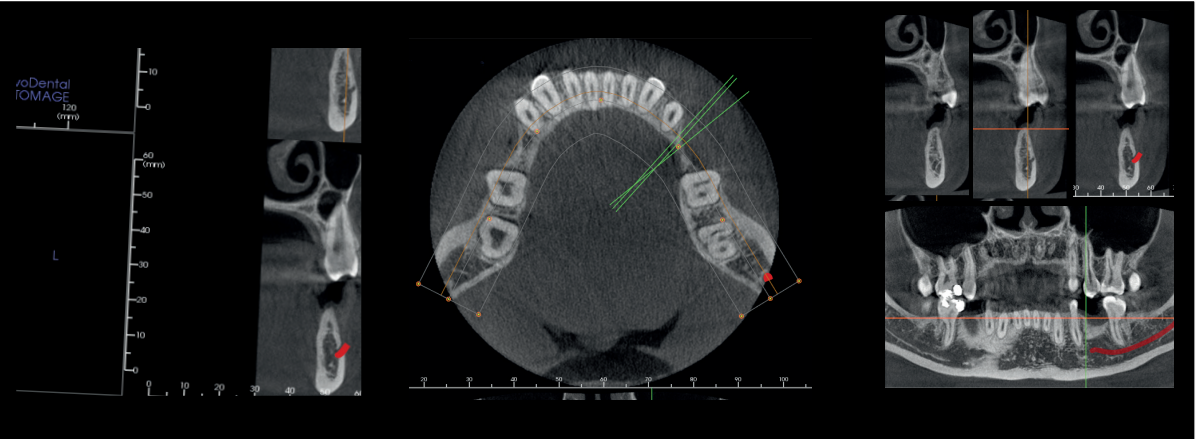
FOV 13x15 cm



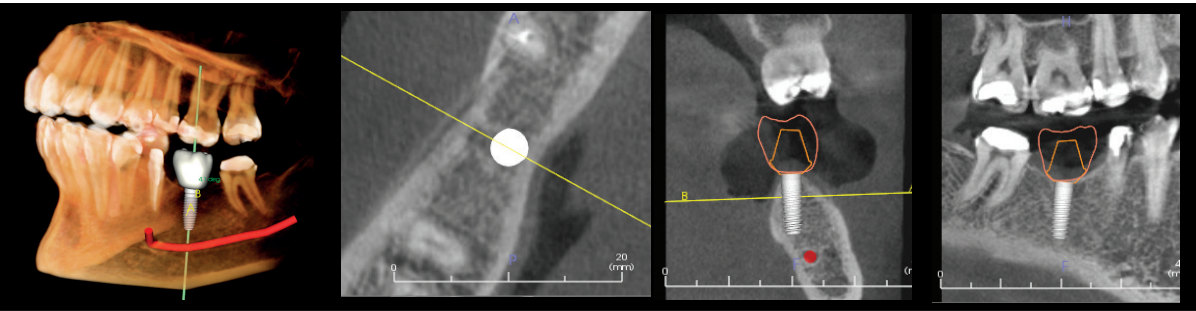
FOV 8x15 cm



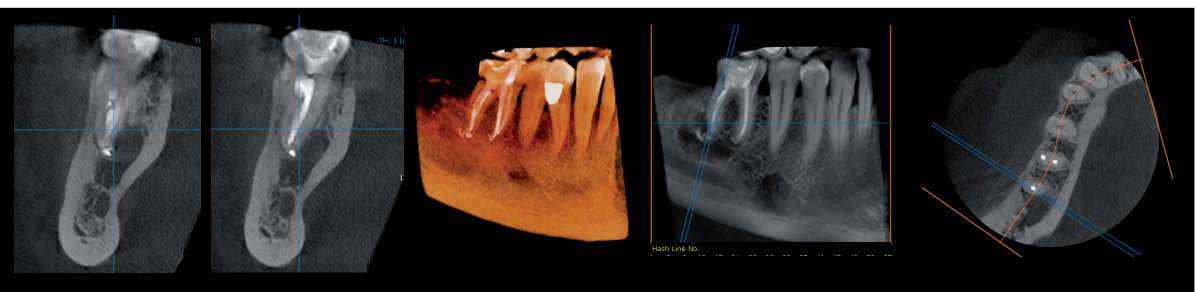
FOV 8x8 cm



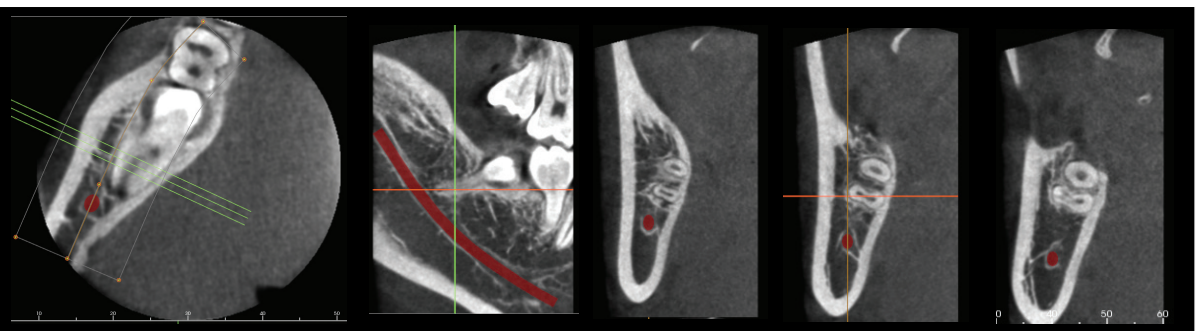
FOV 6x8 cm



FOV 5x5 cm



FOV 6x4 cm





**OP 3D PRO PANORAMIC: Perfection brings confidence**

Consistent, repeatable, gold-standard image quality offers the power to diagnose quickly and efficiently with a wide range of panoramic imaging programs. The unique combination of dedicated panoramic sensor, ADC, easy patient positioning and the best possible imaging geometry provide excellent diagnostic images— time after time.

**Automatic Dose Control (ADC)**

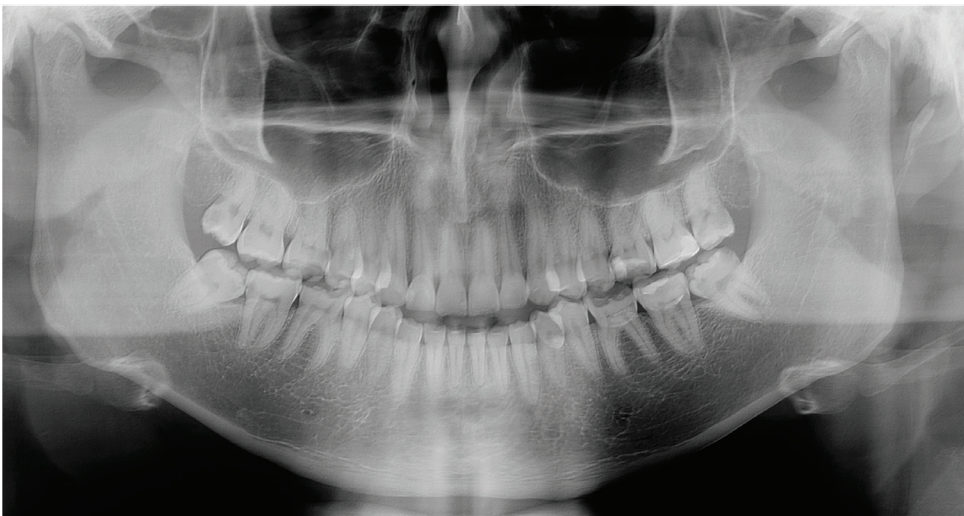
Proprietary ADC technology automatically optimizes panoramic exposure levels for each patient and every acquisition, resulting in patient-specific dosage and enhanced workflow efficiency.

**Multilayer pan**

The OP 3D Pro multilayer feature provides five panoramic images with only one scan to compensate for incorrect patient positioning and difficult anatomies—all achieved in the same scanning time and dose as the traditional panoramic scan.

**ORTHOfocus™ feature— sharp images automatically**

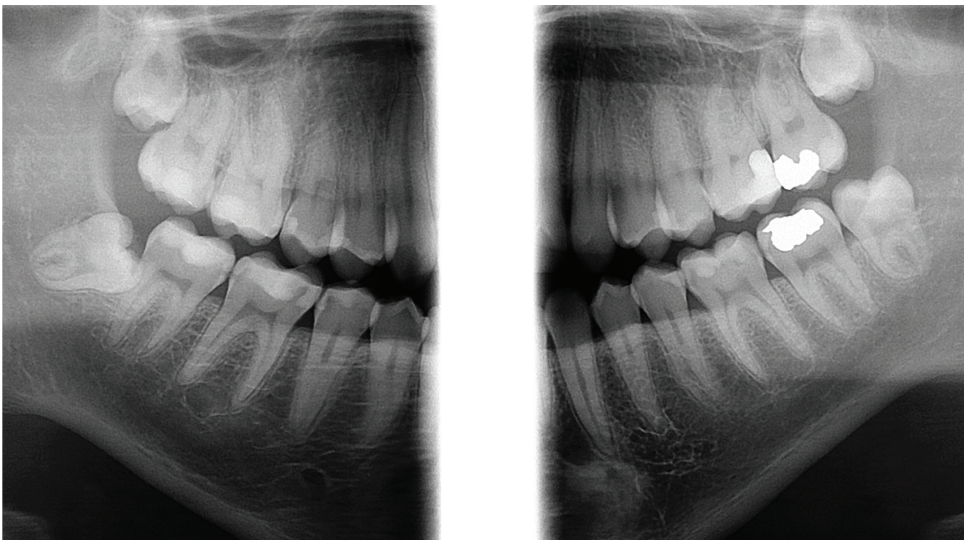
With the user-selectable ORTHOfocus™ feature, optimum panoramic layer is provided automatically and every time.



The standard adult panoramic imaging program provides clear and consistent image.



The pediatric panoramic program has a clinically adapted image layer and reduced images height.



Bitewing-like view is a quick and easy alternative to intraoral bitewing imaging.



# OP 3D PRO CEPHALOMETRIC: Unsurpassed Results

A variety of cephalometric imaging programs are available for OP 3D Pro unit. Furthermore, it can be tailored to your preferences. The cephalometric arm can be positioned to either side for optimum use of space and user-experience.

## Excellent Image Quality For Every Patient

Automatic Facial Contour (AFC) automatically decreases the exposure values during the scan for better soft tissue definition in the facial region.

## Adjustable Scanning Area

Fully adjustable scanning area ensures that by exposing only the required region, the patient dose is decreased.

## True 3-in-1 Platform



Cephalometric



Cephalometric PA

# DTX STUDIO™ Clinic

The comprehensive X-ray software, DTX Studio will be installed with your new device. DTX Studio unifies the software platform for 2D and 3D diagnostics, opening up a whole new era of digital workflow integration.

Compatible with Windows and Mac operating systems, the DTX Studio platform will integrate both existing and future devices as well as current software provisions into one unified working process.





# Leading The Way Through The Decades

For more than 60 years, the name of ORTHOPANTOMOGRAPH™ system has stood for ultimate reliability and clinically correct maxillofacial imaging.

Professor Y.V. Paatero publishes his first paper on Panoramic Tomography.

The first dental panoramic X-ray, ORTHOPANTOMOGRAPH OP1, is developed.

ORTHOPANTOMOGRAPH system becomes the leading name within dental panoramic imaging with models OP5/OC5, OP6 and OP10/OC10.

Direct digital ORTHOPANTOMOGRAPH OP100 product family is introduced.

Volumetric Tomography (VT) is developed to maximize the performance of an ORTHOPANTOMOGRAPH unit.

CBCT era begins. ORTHOPANTOMOGRAPH OP300, the most comprehensive 3-in-1 platform, is launched to celebrate 50 years of ORTHOPANTOMOGRAPH success.

New revision of ORTHOPANTOMOGRAPH OP30 unit is launched.

ORTHOPANTOMOGRAPH™ product family introduces OP 3D Pro product family and OP 2D product.

ORTHOPANTOMOGRAPH™ product family introduces 2D upgradeable panoramic unit

1946

1961

1978

1999

2007

2011

2013

2017

2019

1951

1964

1992

2006

2009

2013

2014

2018

2022

"Pantomography" equipment is presented.

Commercialization of the ORTHOPANTOMOGRAPH units begins with models OP2 and OP3.

New innovations, such as the lifting cassette head and linear tomography, are introduced along with the OP100 product family.

New ORTHOPANTOMOGRAPH product family OP200 is launched.

A new member to the ORTHOPANTOMOGRAPH product family—OP30— is launched.

Introduction of improved 3D image quality, new Metal Artifact Reduction (MAR) tool and endo mode for ORTHOPANTOMOGRAPH OP300 3D images.

ORTHOPANTOMOGRAPH OP300 Maxio configuration, offering diagnostic information of the entire maxillofacial region, is launched.

ORTHOPANTOMOGRAPH product family introduces ORTHOceph tm PLUS design with Cephalometric imaging.

ORTHOPANTOMOGRAPH product line becomes part of DEXIS family

# DEXIS—Dental Imaging Excellence

DEXIS brands are committed to providing the foundation so our customers can do more of what is important to them. Through product innovation, world-class service and exceptional support, DEXIS brands brings the best dental technology—from Gendex,™ Instrumentarium Dental, NOMAD™ Pro 2, and SOREDEX™—together as one.

DEXIS solutions transform practices and patient smiles. Built on over 200 years of dental imaging expertise, our recognized products are trusted by over 150,000 offices worldwide. Today, DEXIS brands help practices improve patient outcomes with an ever-expanding portfolio of award-winning digital solutions, encompassing breakthrough technologies in CBCT, intraoral digital radiography, intraoral scanning, implant planning, handheld x-ray, and navigated surgery. From our groundbreaking i-CAT™ and our handheld NOMAD Pro 2 X-ray system to our smart DEXIS Titanium digital sensors, DEXIS brands meets the needs of patient today while preparing your practice for the treatments of tomorrow.

Everyday, we are empowering clinicians to do more of what matters.





## Technical Specifications

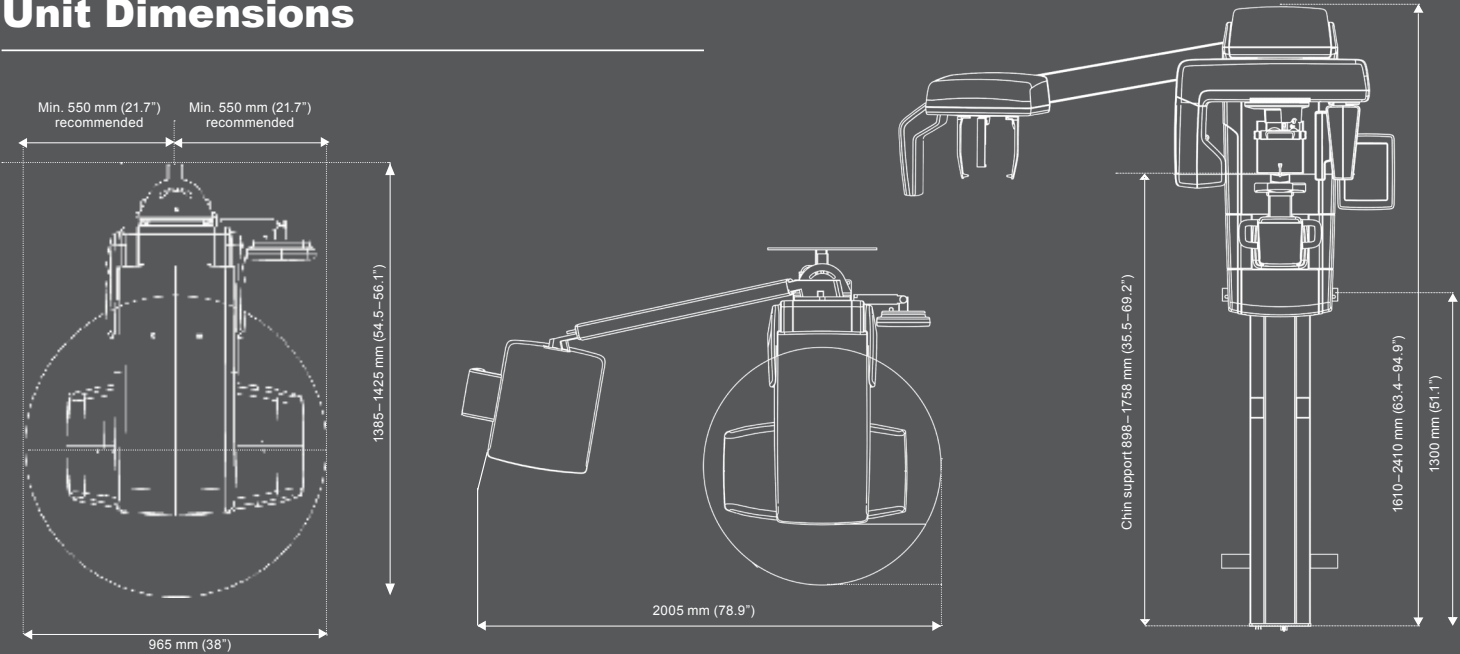
Focal Spot	0.5 mm, IEC 336
Tube Voltage	57-90 kV
Tube Current	3.2-16 mA
HU Capacity	35 kJ, 49 000 HU
Minimum Total Filtration	3.2 mm Al
Wheelchair accessible	Yes

2D	Panoramic	Cephalometric
Image Detector	CMOS	CMOS
Sensor Pixel Size	100 µm	100 µm
Image Pixel Size	100 µm	100 µm
Scan/Exposure Time	8.6-16.1 s	10-20 s
Image Field Height	148 mm	170 mm-260 mm
Imaging Programs	Standard, Pediatric, Ortho Zone, Orthological, Wide Arch, Lat TMJ, PA TMJ, Maxillary Sinus, Bitewing	
Weight	200 kg/440 lbs	250 kg/551 lbs

3D	OP 3D Pro small panel	OP 3D Pro
Image Detector	CMOS	CMOS
Image Voxel Size	85 µm-330 µm	85 µm-420 µm
Scan Time	11-21 s	11-42 s
Exposure Time	1.2-12.6 s	1.2-8.7 s
Image Volume Sizes (HxW)	61x41, 61x78 mm	50x50, 61x78, 78x78, 78x150, 130x150 mm
DICOM Support	Yes	Yes
Min. room height	2050-2450 mm	2050-2450 mm

Minimum System Requirements for 3D Acquisition Workstation	
CPU (processor)	Intel Core i5, i7 or Xeon, 4-cores or more
GPU (graphics processing unit)	NVIDIA Quadro M2000 4GB or GeForce GTX 1050 Ti 4GB
RAM (memory)	8 GB or more
Storage (hard disk)	1 TB or more RAID 1 or RAID 5 recommended for data redundancy, plus backup
Network	Gigabit Ethernet 1000 Mb/s
Operating System	Windows 10 Pro or Enterprise, 64-bit Windows 8.1 Pro or Enterprise, 64-bit Windows 7 Professional, Ultimate or Enterprise, 64-bit, with SP1
Display	1920 x 1080 resolution (Full HD) or higher, at least 300 cd/m2 brightness for typical room lighting, native contrast ratio 100:1 or better, 8-bit panel strongly recommended
Other	OpenCL 1.1 support DVD-ROM drive Anti-virus software
Notes	Please refer to software and device installation manuals for detailed requirements

## Unit Dimensions





# Dental Imaging Excellence from DEXIS™

## Your Complete Diagnostic Workflow:

DEXIS brands bring you the industry's most comprehensive selection of diagnostic imaging solutions, intelligently designed to deliver a complete workflow.

## Future-Ready Innovation:

While delivering enhanced workflow efficiencies today, DEXIS brands prepare your practice for the treatments of tomorrow.

## More Flexibility with More Solutions:

DEXIS brands bring you the industry's most comprehensive selection of diagnostic imaging solutions, intelligently designed to deliver a complete workflow.

## Experts Available on Demand:

Behind our pioneering technologies are our people, many of the industry's most experienced, committed, and responsive experts. Our digital workflow specialists are ready to discuss your goals and build your digital roadmap.



DEXIS Australia & New Zealand  
Level 4, 7 Eden Park Drive, Macquarie Park, NSW 2113  
Australia | 1800 643 603 | [dexis.com/en-au](https://dexis.com/en-au)  
New Zealand | 0800 167 626 | [dexis.com/en-nz](https://dexis.com/en-nz)  
[info-anz@dexis.com](mailto:info-anz@dexis.com)